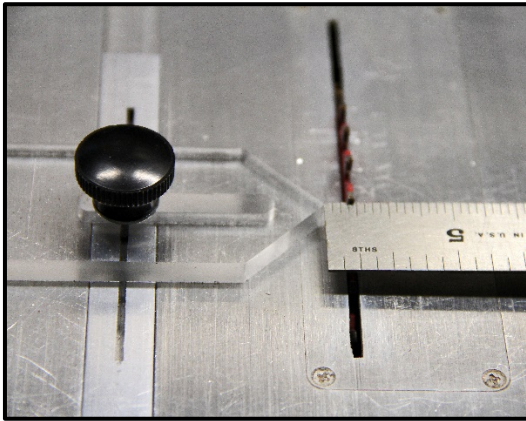
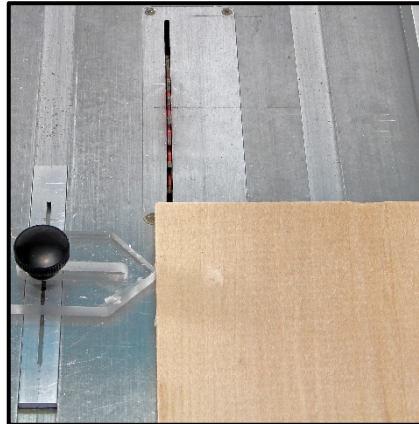


INSTRUCTIONS FOR USING THE NRG's THIN STRIP SAW JIG



1 - SET UP



2 - READY TO CUT



3 - CUTTING STRIP

1 - Place the jig in the slot on the saw table. Measure from the left edge of the blade (slitting type blade) or the left edge of the tooth (carbide blade or blade with set to the teeth) and the tip of the jig the width of strip to be cut. Tighten the knob of the jig enough to hold the dimension. Do not overtighten. (Photo 1)

2 - Move the jig in the slot towards the front of the table to be forward of the front of the saw blade. Photo 3 shows what I consider to be the correct distance in front of the blade. As shown in Photo 2 move the fence to the left until the wood sheet contacts the tip of the jig.

Move the jig in the slot towards the front of the table so that the tip is in front of the saw blade. Tighten the knob of the jig. Do not overtighten. Move the fence to the left until the wood sheet contacts the tip of the jig. (Photo 2) Lock the fence in position.

3 - Turn on the saw and carefully cut the strip from the wood sheet maintaining good contact with the fence. (Photo 3) When the cut is complete carefully move the cut-off strip away from the blade. Turn off the saw. Pick up the wood sheet that is now behind the blade and return it to the area in front of the blade as in Photo 2. Reset and lock the fence and repeat the strip cutting as many times as needed.

As the wood sheet gets thinner with each strip removed, be careful of your fingers and use pushers and hold downs as necessary to get the most strips in a safe manner from each sheet. Remember to stand to the side while cutting the strips and do not forget your eye protection.

INSTRUCTIONS FOR CLEANING / MAINTENANCE

Use only mild soap like dishwashing detergent and water to clean the acrylic piece. Windex and cleaners like Ammonia will cause the plastic to fog.

The metal parts can be cleaned with soap and water or common household cleaners.

MAINTENANCE / REPAIR

The flat head machine screw is a #10-32 x 1/2". The knob has adequate thread depth that a 1/2" or 5/8" x 10-32 flat head machine screw can be substituted in case you lose the original.

Any scratches or chips to the acrylic piece from dropping can be repaired like any other clear acrylic part. There are many products that can be used. Check with your local plastics fabricator, motorcycle dealer or shop, private/local airport pilot's store or on-line. A short video shows the procedure to remove scratches - <https://www.novuspolish.com/video.html> you can go to approximately the 4-minute mark to avoid a bunch a sales talk.